

Discover the edding compact printers: A revolution in industrial marking

Delivering superior reliability, ease of use
and connectivity, edding compact printers
are the next generation marking solutions
for industry 4.0 era





Innovative solutions for all your marking needs

The new edding compact printers

The edding compact printers revolutionise industrial marking. Their smart, compact design houses advanced, intuitive functionality and unparalleled connectivity. Print information can be changed quickly and easily via the integrated touchscreen, web browser or even smartphone.

Designed and manufactured in Germany using the highest quality components, they deliver outstanding reliability. The simple, easy-to-use design enables any user to set up and operate the printers, without the need of a technician.

- Simple, intuitive handling
- Superior reliability
- Advanced communication abilities



Which is the right printing system for me?



in-line

Printheight in mm

12 25

The all-in-one printer

4,3"

Color-LCD Touchscreen

78

Prints per second

600 dpi

Print resolution

123,5 x 77,2 x 83,0 mm

Measurements

Areas of application:

For new and existing production lines

All details on the edding in-line from page 6



IP67

Printheight in mm

12 25

The working horse

IP67

protected

1,8"

Color-LCD Touchscreen

78

Prints per second

600 dpi

Print resolution

220 x 140 x 160 mm

Measurements

Areas of application:

For production environments with increased cleaning requirements and dust accumulation

All details on the edding IP67 from page 12



in-line Pro

Printheight in mm

12 25 50 100

The masterpiece

10,2"

Color-LCD Touchscreen

78

Prints per second

600 dpi

Print resolution

177 x 53 x 67 mm (Printhead)

Measurements

Areas of application:

For multi-head applications and outer package coding

All details on the edding in-line PRO from page 18



portable

Printheight in mm

12 25 50

The mobile printer

up to 12 h

Battery capacity

4,3"

Color-LCD Touchscreen

78

Prints per second

600 dpi

Print resolution

297 x 152 x 104 mm

Measurements

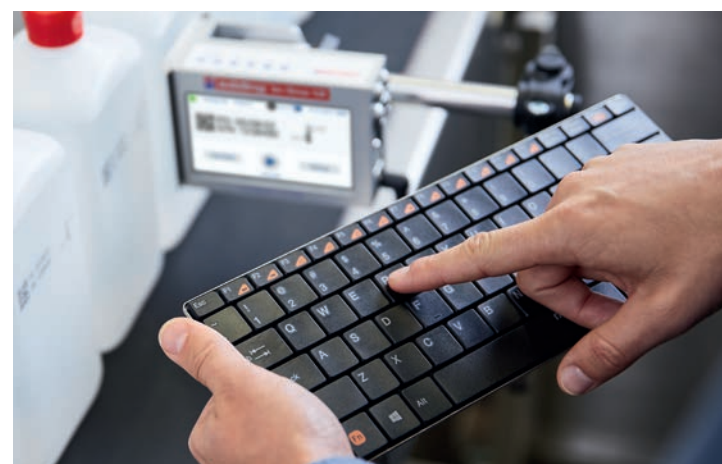
Areas of application:

For mobile application off the production line

All details on the edding portable from page 24



Combining our best ideas: adding in-line 12 & 25



The next-generation printer "solution" for industrial marking: edding in-line

Developed with our technology partner Elried, the edding in-line printer stands apart from other industrial printers. Its intuitive handling and animated user guides make it easy for any user to install and begin operating in just a few minutes, without requiring a technician or any training. The in-line comes in an all-in-one box, with all the accessories needed to get you printing straight away.

The in-line boasts unprecedented communication capabilities for an industrial printer, fully integrating into your network. Made in Germany, the high quality

engineering also means you can be assured of maximum up time. Finally, with edding's wide range of inks you can print on almost any material; including cardboard, plastic, glass and metal.

The in-line combines reliability, innovative ease-of-use and advanced connectivity. It boosts production efficiency, delivers precision marking and brings you firmly into the Industry 4.0 era.



Benefits of the in-line:

- Installation and start-up in minutes: compact design and animated user guide
- Input via precise touchscreen, wireless keyboard, mobile devices or PC
- Ethernet and WiFi for connection to ERP systems
- Serialized printing
- Support for all relevant barcodes, including EAN, QR, Datamatrix and GS1
- From 75 up to 600 dpi high-resolution print for flawless print results
- Unique range of inks for almost every material / surface
- Environmentally friendly thanks to minimum solvent requirement
- Greater cost control: real costs per print, no maintenance costs
- Large selection of digital and analogue inputs and outputs incl. digital Multi-I/O
- Robust industrial design with high-quality Yamaichi accessory connections
- Extremely durable and high-quality aluminium housing
- High reliability supported by 24-month warranty (excl. consumables)
- Developed and manufactured in Germany by our technology partner Elried

All-in-one set with all necessary accessories



Scope of delivery

- edding in-line print system
- Complete Mounting material: stainless steel rods in lengths 20, 25 & 35 cm, 2x cross clamps, 1x base clamp, 1x printer clamp, hex wrench and screws
- Wireless keyboard
- USB stick
- edding 8850 carpenter pen
- Power supply unit 110 – 240V and grounding cable

Article number LO-G-I-12-1/ LO-G-I-25-1

Scan to watch



Specifications edding in-line

Printing process	High-res TIJ (Thermal Inkjet) print technology up to 600 dpi Print
Print height	Up to 11 lines, between 1.0 mm and 12.7 mm (0.5"), respectively 25 mm (1.0")
Print speed	240 m (787 feet) per minute maximum print speed Up to 78 prints per second
Print distance	Print distance to surface of up to 8 mm (0.3"), 16 mm (0.6") with SP25 ink
Print surfaces	Extensive ink portfolio for almost all materials and surfaces in multiple colours
Print options	Text, logos, date/time, counter, batch/box number, 1D and 2D barcodes
Memory capacity	Internal memory for over 100,000 texts and logos
Connectivity	Ethernet connection RJ 45 incl. DHCP Communication interfaces via MQTT, OPC UA, http request and TCP-Server Web server for access from every workstation Module for serialized printing Prebuilt program code for siemens PLC control App for iOS and Android
User interface	Intuitive user interface with genuine WYSIWYG print preview Automatic wizards for printer setup Graphic instructions for installation and maintenance in printer display
Input devices	On-screen keyboard, wireless keyboard, any tablet, smartphone or PC, designated app iOS/Android
Display	Capacitive 4.3" colour LCD touchscreen with LED technology
6 LED displays	ON/OFF, print, low ink level, alarm, print direction right/left
Input / Output	Specific industry connection for encoder, alarm, relay and photoelectric cells 1 & 2 2 inputs for photoelectric cell as Multi-IO: Reset product counter, increase product counter, change print direction, start/stop print, etc. 2 high-speed USB 2.0 inputs
Language selection	English, Bosnian, Croatian, Czech, Danish, Dutch, French, German, Italian, Korean, Portuguese, Romanian, Serbian, Spanish, Thai, Turkish, Simplified: Chinese, Polish, Russian, Arabic
Housing / Structure	Very robust and impact-resistant aluminium housing Stainless steel deflector on the front of the printer for food environments Fully integrated 4-in-1 design (control unit, screen, button and ink cartridge) Stand-alone unit, can be used with or without PC
Power supply	AC 100-240 V, 50/60 Hz, 1.6 A, automatic switching
Dimensions (L/W/H)	123.5 x 77.2 x 83.0 mm
Weight	0.8 kg – without ink cartridge
Operating environment	5-40 °C (41-104 °F) at 10-90% humidity (non-condensing)
Quality	Made in Germany

In case of specific needs please contact printers@edding.tech



Where ideas and needs converge: adding in-line IP67



Taking a stand against the harshest industrial environments: edding in-line IP67

The edding in-line IP67 system remains impervious to the challenges posed by dust and moisture. Designed to endure high-pressure cleaning and capable of withstanding submersion of up to 1 meter, its remarkable durability positions it as the ultimate solution for environments with rigorous cleaning requirements or a prevalence of moisture and dust.

The system seamlessly integrates with the comprehensive edding ink portfolio, ensuring consistent, high-quality printing on a wide range of surfaces.

Specialized food-certified inks are also available to meet the stringent demands of the food industry.

The edding in-line IP67 system effortlessly combines reliability, innovative simplicity, and advanced connectivity. By enhancing production efficiency, facilitating precise marking, and propelling you into the Industry 4.0 era, it becomes an indispensable asset.



Benefits of the in-line IP67:

- Completely dustproof, even for the harshest environments
- Waterproof up to 1 meter immersion depth
- Tested according to IP67 industry standard
- Integrated Wifi and waterproof network connection
- Operation directly on the device or externally via app (iOS & Android), PC or tablet
- From 75 up to 600 dpi high-resolution print for flawless print results
- Unique range of inks for almost every material / surface
- Environmentally friendly thanks to minimum solvent requirement
- Greater cost control: real costs per print, no maintenance costs
- High reliability supported by 24-month warranty (excl. consumables)
- Developed and manufactured in Germany

All-in-one set with all necessary accessories



Scope of delivery

- edding in-line IP67 print system
- Complete mounting material: stainless steel rods in lengths 20, 25 & 35 cm, 2x cross clamps, 1x base clamp, 1x printer clamp, hex wrench and screws
- Relay cable
- USB stick
- edding 8850 carpenter pen
- Power supply unit 110 – 240V

Article number LO-G-I-IP-1

Specifications edding in-line IP67

Printing process	High-res TIJ (Thermal Inkjet) printing technology up to 600 dpi
Print height	Up to 11 lines, between 1.0 mm and 12.7 mm (0.5")
Print speed	240 m (787 feet) per minute maximum print speed Up to 78 prints per second
Print distance	Print distance to surface of up to 8 mm (0.3")
Print surfaces	Extensive ink portfolio for almost all materials and surfaces in multiple colors
Print options	Text, logos, date/time, counter, batch/box number, 1D and 2D barcodes
Memory capacity	Internal memory for over 100,000 texts and logos
Connectivity	Ethernet connection RJ 45 incl. DHCP Communication interfaces via MQTT, OPC UA, http request and TCP-Server Web server for access from every workstation Module for serialized printing Prebuilt program code for siemens PLC control App for iOS and Android
User interface	Intuitive user interface with genuine WYSIWYG print preview Automatic wizards for printer setup Graphic instructions for installation and maintenance in printer display
Input devices	Any tablet, smartphone or PC, designated app IOS/Android
Display	Waterproof LCD screen with 1.8" and LED technology
4 LED displays	Power, print, low ink, alarm
Input / Output	Dedicated dust and waterproof industrial connector for encoder, alarm, and light sensor 1 high-speed USB 2.0 input
Language selection	English, Bosnian, Croatian, Czech, Danish, Dutch, French, German, Italian, Korean, Portuguese, Romanian, Serbian, Spanish, Thai, Turkish, Simplified: Chinese, Polish, Russian, Arabic
Housing / Structure	Extremely robust and impact-resistant PE plastic housing Dust and splash-proof according to IP67 (with empty cartridge) Fully integrated 4-in-1 design (control unit, integrated display, print head and ink cartridge) Stand-alone unit, can be used with or without PC
Power supply	AC 100-240 V, 50/60 Hz, 2.5 A, automatic switching
Dimensions (L/W/H)	215 x 98 x 160 mm
Weight	1,6 kg - without ink cartridge
Operating environment	5-40 °C (41-104 °F)
Quality	Made in Germany

In case of specific needs please contact printers@edding.tech



Introducing the next evolution: adding in-line Pro



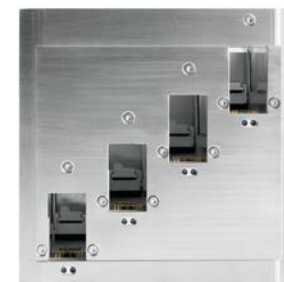
The Ultimate Next-Gen Printing Solution: edding in-line Pro

The edding in-line Pro represents cutting-edge industrial printing, excelling in both performance and versatility. Its exceptional print height, stretching up to 100 mm, effortlessly tackles complex and expansive printing projects.

The in-line Pro truly stands out with its impressive print speed, reaching up to 78 prints per second. This feature positions it as an ideal choice for high-speed production environments, where time is crucial.

Its adaptability enables variable installation options, offering flexibility with cable lengths of up to 100 meters, ensuring easy setup even in challenging surroundings.

The compact print head, combined with a user-friendly 10.2" touch panel, simplifies operation without necessitating specialized training. Moreover, its extensive interfaces facilitate seamless integration into existing machinery and IT systems, making Industry 4.0 happen.



Benefits of the in-line Pro:

- Operated via high-resolution 10.2" touchscreen
- Support for up to 4 individual print heads
- Print heads can be used individually or combined to up to 4 heads in one
- Connection of print heads and accessories through robust industrial connectors
- External access via PC, smartphone, tablet, or app (iOS & Android)
- Sturdy construction made of aluminum and stainless steel
- Razor-sharp printing with up to 10 cm height
- Sustainable replacement of expensive labels
- Cartridge locking mechanism "IronLock" for optimal cartridge positioning even under strong vibrations
- Automatic forward/reverse detection when using an encoder
- "Remote Support" remote maintenance solution

All-in-one set with all necessary accessories



Scope of delivery

- edding in-line Pro control unit
- Complete mounting material: stainless steel rods in lengths 20 & 25 cm, 1x cross clamps, 1x base clamp, 1x joint clamping piece, hex wrench and screws
- USB stick
- edding 8850 carpenter pen
- Power supply unit 110 – 240V
- Print head
- Complete mounting material: stainless steel rods in lengths 20, 25 & 35 cm, 2x cross clamps, 1x base clamp, 1x printer clamp, hex wrench and screws
- Connecting and grounding cable

Article number LO-G-ILP-CU

Specifications edding in-line Pro

Printing process	High-Res TIJ (Thermal Inkjet) print technology up to 600 dpi
Print height	Full-surface printing with up to 100 mm print height (with full extension with 4 heads)
Print speed	240 m (787 feet) per minute maximum print speed Up to 78 prints per second
Print distance	Print distance to surface of up to 8 mm (0.3"), 16 mm (0.6") with SP25 ink
Print surfaces	Extensive ink portfolio for almost all materials and surfaces in multiple colors
Print options	Text, logos, date/time, counter, batch/box number, 1D and 2D barcodes
Memory capacity	Internal memory for over 100,000 texts and logos
Connectivity	Ethernet connection RJ 45 incl. DHCP Communication interfaces via MQTT, OPC UA, http request and TCP-Server Web server for access from every workstation Module for serialized printing Prebuilt program code for siemens PLC control App for iOS and Android
User interface	Intuitive user interface with genuine WYSIWYG print preview Automatic wizards for printer setup Graphic instructions for installation and maintenance in printer display
Input devices	On-screen keyboard, wireless keyboard, any tablet, smartphone or PC, designated app iOS/Android
Display	Capacitive 10,2" colour LCD touchscreen with LED technology
6 LED displays	ON/OFF, print, low ink level, alarm, print direction right/left
Input / Output	Specific industry connection for encoder, alarm, relay and photoelectric cells 1 & 2 2 inputs for photoelectric cell as Multi-IO: Reset product counter, increase product counter, change print direction, start/stop print, etc. 2 high-speed USB 2.0 inputs
Language selection	English, Bosnian, Croatian, Czech, Danish, Dutch, French, German, Italian, Korean, Portuguese, Romanian, Serbian, Spanish, Thai, Turkish, Simplified: Chinese, Polish, Russian, Arabic
Housing / Structure	Very robust and impact-resistant aluminum housing Stainless steel deflector on the front of the printer for food environments Print head and control unit seperated. Up to 4 heads per control unit Stand-alone unit, can be used with or without PC
Power supply	AC 100-240 V, 50/60 Hz, 1,6 A, automatic switching
Dimensions (L/W/H)	166 x 250 x 55 mm (control unit), 237 x 53 x 67 mm (1"-print head)
Weight	1,3 kg (control unit), 0,4 kg (1"-print head)
Operating environment	5-40 °C (41-104 °F) at 10-90% humidity (non-condensing)
Quality	Made in Germany

In case of specific needs please contact printers@edding.tech



Flexibility at it's best:
edding portable



The smartest mobile printer: edding portable

The portable is the perfect solution for marking away from the production line. With Elried, our German technology partner, we have taken the next generation technology of the in-line and cleverly adapted it to create a compact, mobile printer. This uniquely flexible printer delivers outstanding print results in whatever location you need to mark – whether that's in a warehouse or out on a building site. Barcodes, data matrix codes, texts and logos are printed in crisp, high-quality-resolution up to 600 dpi, while the positioning laser ensures accuracy. edding's broad range of ink types means you can print on almost any material.

The portable's innovative communication technology makes it possible to detect the coding data from any data source within the Company, or you can simply use a barcode scanner to generate the print text. The printer's superb reliability ensures maximum up time as no technician or maintenance is required. No maintenance costs also mean you achieve true cost-per print. The 4Ah Metabo battery that comes with the edding portable will keep you printing for up to 12 hours. The printer can also be used with an 10Ah battery to achieve 30 hours non-stop working.



Benefits of the edding portable:

- Up to 50 mm (2.0") print height
- 4Ah Metabo LIHD industrial battery allows up to 12 hours of operating time
- Alternatively, can also be used with 10Ah high-performance battery for 30 hours of non-stop operation
- Integrated positioning laser ensures marking in the right place
- Ergonomic design for continuous work
- Input via precise touchscreen, wireless keyboard, mobile devices or PC
- Ethernet and WiFi for connection to ERP systems
- High-resolution up to 600 dpi print for flawless print results
- Support for all relevant barcodes, including EAN, QR, Datamatrix and GS1
- Unique range of inks for almost every material / surface
- Environmentally friendly thanks to minimum solvent requirement
- High reliability, supported by 24-month warranty (excl. consumables)

Complete set in carry case



Scope of delivery

- edding portable print system
- Stackable Swiss carry case
- Wireless keyboard
- USB stick
- 4.0 Ah Metabo LiHD high-performance battery
- Metabo battery quick charger

Scan to watch



Article number LO-G-PO-12-1 / LO-G-PO-25-1 / LO-G-PO-50-1

Specifications edding portable

Printing process	High-res TIJ print technology up to 600 dpi
Print height	Up to 44 lines, between 1.0 mm and 12.7 mm (0.5"), 25 mm (1.0"), respectively 50 mm (2.0")
Print distance	Print distance to surface of up to 8 mm (0.3"), 16 mm (0.6") with SP25 ink
Print surfaces	Extensive ink portfolio for almost all materials and surfaces in multiple colors
Print options	Text, logos, date/time, counter, batch/box number, 1D and 2D barcodes
Memory capacity	Internal memory for over 100,000 texts and logos
Connectivity	Ethernet connection RJ 45 incl. DHCP Communication interfaces via MQTT, OPC UA, http request and TCP-Server Web server for access from every workstation Module for serialized printing Prebuilt program code for siemens PLC control App for iOS and Android
User interface	Intuitive user interface with genuine WYSIWYG print preview Automatic wizards for printer setup Graphic instructions for installation and maintenance in printer display
Input devices	On-screen keyboard, wireless keyboard, any tablet, smartphone or PC, designated app iOS/Android
Display	Capacitive 4.3" colour LCD touchscreen with LED technology
6 LED displays	ON/OFF, print, low ink level, alarm, print direction right/left
Input / Output	2 high-speed USB 2.0 input
Language selection	English, Bosnian, Croatian, Czech, Danish, Dutch, French, German, Italian, Korean, Portuguese, Romanian, Serbian, Spanish, Thai, Turkish, Simplified: Chinese, Polish, Russian, Arabic
Housing / Structure	Very robust and impact-resistant aluminium housing Stainless steel deflector on the front of the printer for food environments Fully integrated 4-in-1 design (control unit, screen, button and ink cartridge) Stand-alone unit, can be used with or without PC
Battery	Metabo LIHD premium industrial battery (4000 mAh) Charger AC 100-240 V, 50/60 Hz, 3 A, beeper Works for 12 hours and only needs 35 minutes to charge Can be used for other Metabo power tools
Dimensions (L/W/H)	257 x 152 x 104 mm (portable 12 & 25), 308 x 152 x 126 mm (portable 50)
Weight	1.2 kg (portable 12 & 25), 1,0 kg (portable 50) without battery and ink cartridge
Operating enviroment	5-40 °C (41-104 °F) at 10-90 % humidity (non-condensing)
Quality	Made in Germany

In case of specific needs please contact printers@edding.tech

The largest ink assortment for industrial applications

Inks for porous surfaces

such as cardboard, wood etc.

<div></div> SP Black	LO-T-12-SP-01	LO-T-25-SP-01
<div></div> SP Red	LO-T-12-SP-02	LO-T-25-SP-02
<div></div> SP Blue	LO-T-12-SP-03	LO-T-25-SP-03
<div></div> SP Green	LO-T-12-SP-04	

Inks for non-porous surfaces

such as metal, plastic, glass etc.

<div></div> NP Black	Universal ink for all surfaces	LO-T-12-NP-01	LO-T-25-NP-01
<div></div> NPX Black	Faster drying and particularly strong adhesion	LO-T-12-NPX-01	
<div></div> NPX Black PVC	Special formulation for printing on PVC	LO-T-25-NPX-01	
<div></div> NPXP 12 Black	Over 72 h Decap time	LO-T-12-NPXP-01	
<div></div> NP Red		LO-T-12-NP-02	LO-T-25-NP-02
<div></div> NP Blue		LO-T-12-NP-03	LO-T-25-NP-03
<div></div> NP Green		LO-T-12-NP-04	LO-T-25-NP-04

Pigmented inks for dark surfaces

such as metal, plastic, glass etc.

<div></div> NPX Yellow		LO-T-12-NPX-05	
<div></div> NPX White		LO-T-12-NPX-21	LO-T-25-NPX-21
<div></div> NPX Light Blue	Extremely UV resistant	LO-T-12-NPX-10	

Special inks

for special applications

<div></div> NPX UV readable	Transparent safety ink, only visible under UV light	LO-T-12-SPX-UV-00	
<div></div> SPX Food-grade Brown	Edible ink, contains no hazardous substances	LO-T-12-SPX-FG-01	
<div></div> NPX Black UV-Dry	Solvent resistant, instant dry, requires UV lamp	LO-T-12-NPXU-01	
<div></div> NPX White UV-Dry	Solvent resistant, instant dry, requires UV lamp	LO-T-12-NPXU-21	

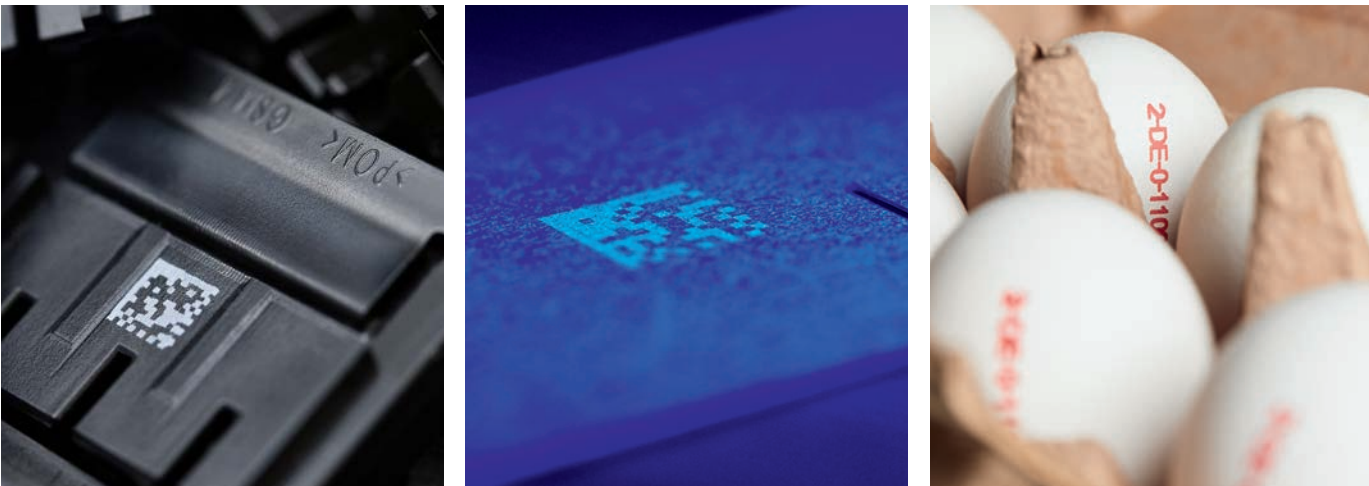
SP inks for porous surfaces



NP inks for non-porous surfaces



Special inks



Accessories tailored to your needs



Scan to see
full accessories list



Service you can rely on

In every production environment, the safety and reliability of systems are the most important factors in operational efficiency. That's why we have made reliability a priority in the design and manufacture of our high-quality compact printers.

If a problem with the printer was to occur, the warranty ensures a speedy solution. A temporary replacement will typically be delivered to you the next day, while repairs are carried out for free.



Food and beverage industry



Logistics and transport



Life sciences and chemicals



Automotive and industry



edding International GmbH
Bookkoppel 7
D-22926 Ahrensburg
GERMANY

Phone: +49 (0)4102 808-0
E-Mail: printers@edding.tech



See our products
in action:

